

Christmas



This year Christmas Gift is all about relationships. As we come out of a season where many of our connections with others have been less close, we want to help bring people closer together.



FILL OUT A CARD, TURN IT IN AT YOUR CAMPUS
AND HANG AN ORNAMENT ON THE TREE AS A
SYMBOL OF THE LIVES WE ARE IMPACTING.

do one or many

WE REALIZE THAT POVERTY COMES IN MANY DIFFERENT FORMS. CHRISTMAS GIFT HAS HISTORICALLY BEEN ABOUT HELPING PEOPLE IN FINANCIAL POVERTY, BUT AS WE EMERGE FROM A GLOBAL PANDEMIC, THERE IS GREAT RELATIONAL, EMOTIONAL, AND SPIRITUAL POVERTY AS WELL. MANY PEOPLE'S RELATIONSHIPS AND CONNECTIONS FADED OR DISAPPEARED, AND WE WANT TO BRING HOPE INTO THOSE SITUATIONS WITH GIFTS, QUALITY TIME AND ENCOURAGING WORDS.

This year, we're expanding Christmas Gift to help restore some of the benefits of building relationships. We want you to reach out to the people in your neighborhoods, your workplaces, your schools, your communities, and encourage someone who is having a difficult time financially or relationally.

In addition to acts of generosity, you can give a financial gift to the Christmas Gift project to help support your campus partner(s). Learn more at fairhaven.church/christmasgift

NOT SURE WHAT TO DO, or who to reach out to? Pray about it, and get some inspiration from our list of suggestions. It's also a great activity for small groups to do together.

PAY IT FORWARD



Pay for
someone's **GAS**



Pay a **UTILITY
BILL** for someone



Pay for
someone's
GROCERIES



Leave **DETERGENT**
and **QUARTERS** at
a laundry mat



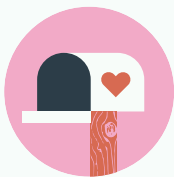
Pay for someone's
COFFEE OR MEAL



Surprise someone
with a **GIFT CARD**



Leave a **BIG TIP**
for your server



Give a gift card
for lunch for your
GARBAGE COLLECTOR
or **MAIL/DELIVERY PERSON**



Help someone
who's **STRUGGLING
FINANCIALLY**



**DONATE PET FOOD/
TOYS** to 4 Paws
for Ability

MAKE, BAKE AND TAKE



COOK A MEAL OR BAKE COOKIES for a neighbor, coworker or friend



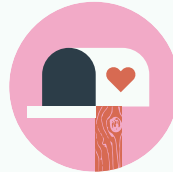
DELIVER GOODIES AND A NOTE of thanks to a police or fire station



DROP OFF DINNER to help a busy family



MAKE MEAL ARRANGEMENTS for someone dealing with a loss or a health issue



LEAVE A NOTE AND BAKED GOODS for your garbage collector, mail/delivery person



INVITE SOMEONE OVER FOR A MEAL who might be alone for the holidays



Send Christmas cards to a **LOCAL NURSING OR RETIREMENT HOME**



Have **KIDS MAKE HAND-MADE CARDS** with encouraging notes for people they know

FEEL FREE TO COME UP WITH
CREATIVE IDEAS BEYOND THIS LIST.
PRAY ABOUT HOW YOU CAN SHOW
GOD'S LOVE IN PRACTICAL WAYS.

SERVE AND ENCOURAGE



Send a card or note to **ENCOURAGE A NEIGHBOR, COWORKER,** someone you know



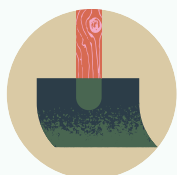
HELP TUTOR a struggling student



Write a **THANK YOU LETTER** to a teacher, coach or mentor



Babysit for a **SINGLE PARENT** or for a couple to **ENJOY A DATE NIGHT**



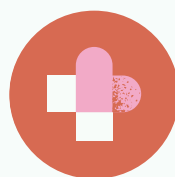
RAKE A YARD or shovel a driveway



VISIT WITH A NEIGHBOR or someone who may be alone



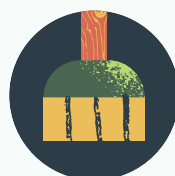
Make **HOMELESS CARE KITS** for a shelter



Connect with a **FAMILY AFFECTED BY A HEALTH SITUATION** and offer assistance



Serve with a **CHRISTMAS GIFT PARTNER** *(See last page for info)*



Help a young parent with **HOUSEHOLD CHORES**

BEAVERCREEK PARTNER ORGANIZATIONS

FEED THE CREEK

Feed the Creek helps provide weekend food bags and holiday meal boxes to families in need in Beavercreek.

Items needed:

- ✓ POP-TOP MICROWAVE MEALS 7.5 OZ SERVING
- ✓ POP-TOP CAN OF FRUIT 8-9 OZ
- ✓ NON-REFRIGERATED PUDDING 3.5 OZ
- ✓ POP-TOP CAN OF VEGETABLES 8.5 OZ
- ✓ POP-TOP CAN TUNA 3 OZ. OR PACKET
- ✓ POP-TOP CANNED CHICKEN 4.5 OZ
- ✓ GOLDFISH OR ANIMAL CRACKERS (SNACK PACK)
- ✓ CEREAL/OATMEAL (INDIVIDUALLY WRAPPED)
- ✓ CEREAL OR GRANOLA BARS (INDIVIDUALLY WRAPPED)
- ✓ FRUIT JUICE 10 BOXES 6.75 OZ.
- ✓ CHEESY MAC INDIVIDUAL SIZE 2-3 OZ.
- ✓ PEANUT BUTTER 18 OZ

Drop items off at the Beavercreek campus office.

In addition to acts of generosity, you can also give a financial gift to the Christmas Gift project to help our campus partner care for underserved people.



TO GIVE FINANCIALLY, CHOOSE "CHRISMTAS GIFT 2021" WHEN YOU GIVE ONLINE OR WRITE "CHRISMTAS GIFT 2021" ON THE MEMO LINE OF YOUR CHECK.

CENTERVILLE PARTNER ORGANIZATIONS

HANNAH'S TREASURE CHEST

Hannah's Treasure Chest enriches the lives of children in need by providing clothing, books, safety equipment and hygiene items, including diapers.

hannahstreasure.org

VICTORY PROJECT

Victory Project is a faith-based, after-school program that mentors young men through homework assistance, entrepreneurship, life skills classes and weekly Bible studies, along with weeknight dinners.

victoryproject.org

In addition to acts of generosity, you can also give a financial gift to the Christmas Gift project to help our campus partners care for underserved people.



TO GIVE FINANCIALLY, CHOOSE "CHRISMTAS GIFT 2021"
WHEN YOU GIVE ONLINE OR WRITE "CHRISMTAS GIFT
2021" ON THE MEMO LINE OF YOUR CHECK.

NORTHMONT PARTNER ORGANIZATION

SHOES 4 THE SHOELESS

Shoes 4 the Shoeless provides new, correctly fitting gym shoes and socks to Dayton area children in need, helping children eliminate one of poverty's most visible stigmas.

We will be collecting new shoes (children's 10-adult 11) **and socks** (youth-adult). Athletic shoes only, no dress shoes or boots.

In addition to acts of generosity, you can also give a financial gift to the Christmas Gift project to help our campus partner care for underserved people.



TO GIVE FINANCIALLY, CHOOSE "CHRISMTAS GIFT 2021"
WHEN YOU GIVE ONLINE OR WRITE "CHRISMTAS GIFT
2021" ON THE MEMO LINE OF YOUR CHECK.

SPRINGBORO PARTNER ORGANIZATIONS

FRANKLIN HELP CENTER

Franklin Downtown Help Center provides food, meals, clothing, housing items and helps meet other needs for local underserved families. **We will be collecting toys for preschool-age children.**

SPRINGBORO COMMUNITY ASSISTANCE CENTER

The Springboro Community Assistance Center provides a food pantry and backpack program, along with other types of assistance for families in need in the Springboro area.

Items needed:

- ✓ SHAMPOO WITH CONDITIONER
- ✓ INDIVIDUAL BAGS OF CHIPS
- ✓ INDIVIDUAL/MICROWAVEABLE CUPS OF MAC-N-CHEESE
- ✓ INDIVIDUAL/MICROWAVEABLE CUPS OF RAVIOLI
- ✓ POP TARTS
- ✓ BREAKFAST BARS/GRANOLA BARS/ PROTEIN BARS
- ✓ MUFFINS
- ✓ FRUIT SNACKS
- ✓ INDIVIDUAL SIZE DRINKS (GATORADE, WATER BOTTLES AND JUICE BOXES/BOTTLES)

TO GIVE FINANCIALLY, CHOOSE "CHRISMTAS GIFT 2021"
WHEN YOU GIVE ONLINE OR WRITE "CHRISMTAS GIFT
2021" ON THE MEMO LINE OF YOUR CHECK.

In addition to acts of generosity, you can also give a financial gift to the Christmas Gift project to help our campus partners care for underserved people.





[FAIRHAVEN.CHURCH/](https://fairhaven.church/)

[CHRISTMASGIFT](https://fairhaven.church/)

to learn more.

Christmas

